



AESA Member Annual Report
2012

PING, Inc.



Leadership Characteristics

Conservation and Pollution Prevention

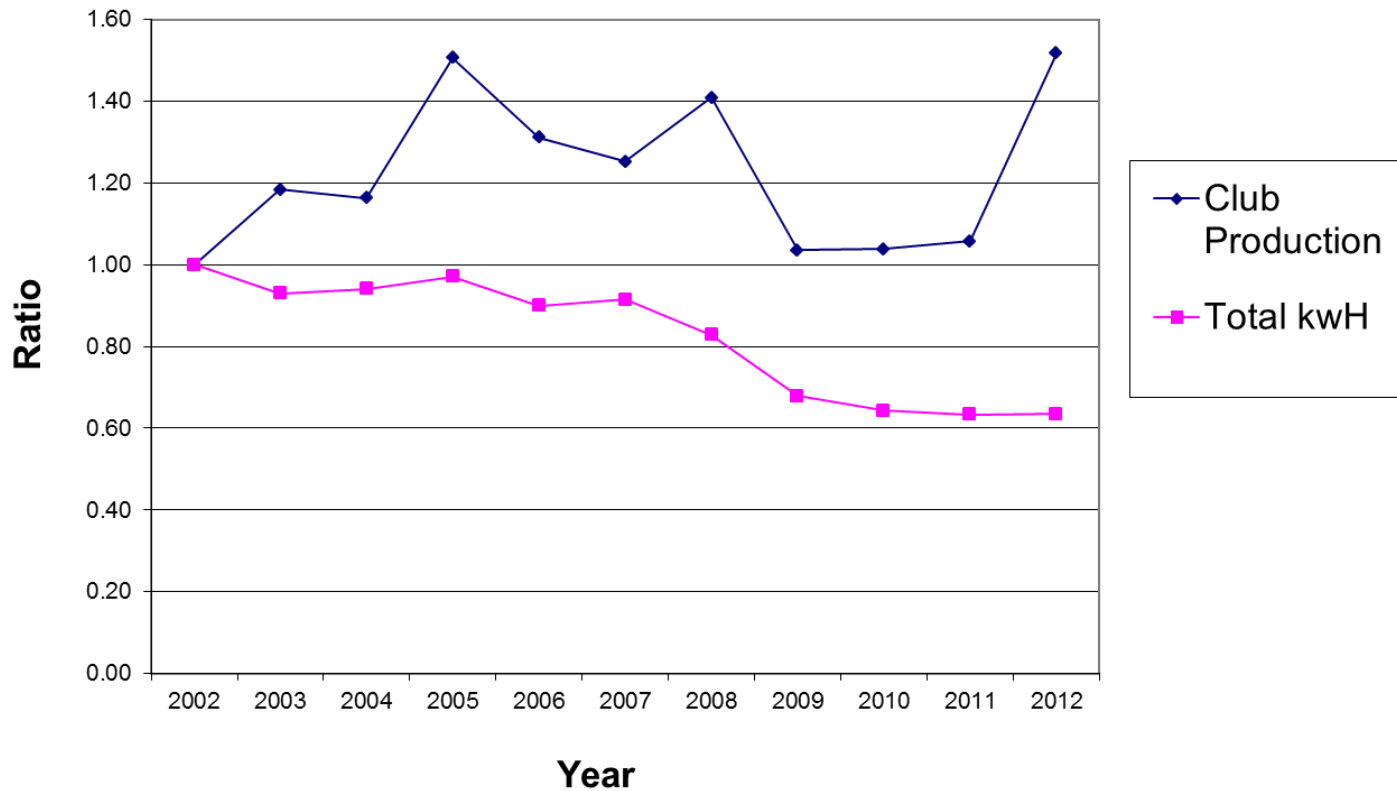


Tons removed: 2,700 – 84% recycled
~ \$68,000 disposal cost avoidance

Leadership Characteristics

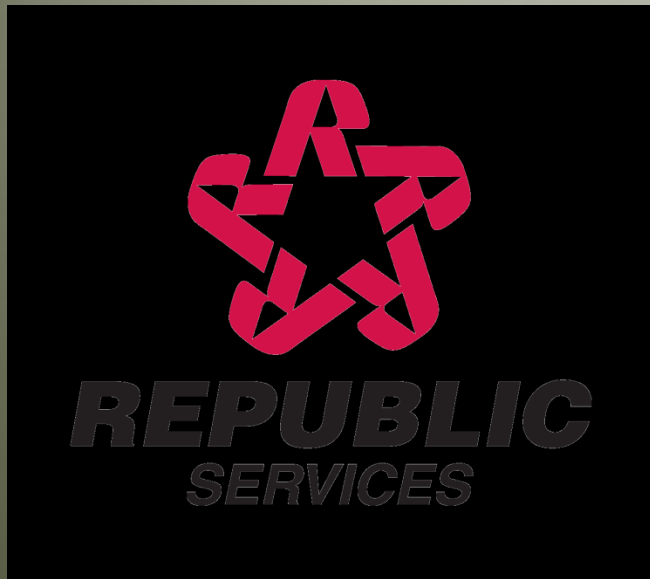
Conservation and Pollution Prevention

Total kWh and Production Ratios Since 2002

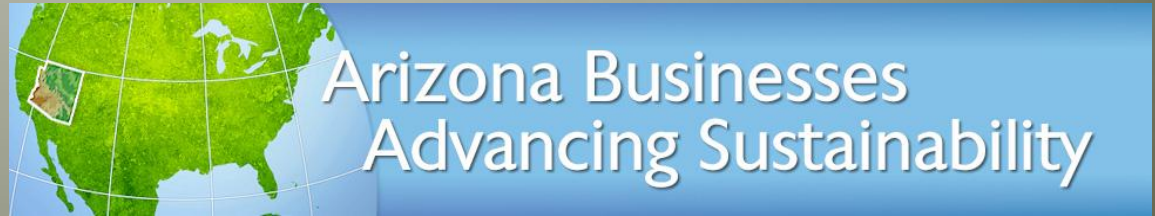


Education and Mentoring

Mentoring Organizations



Education and Mentoring Programs Enhancing Relationship to the Environment



Organizational Environmental Policies

EMS and audit program



Recertification audit: 4/2013


Internal EMS audit: 12/2012

External Compliance Audit:
10/2012

Organizational Environmental Policies


EMS and audit program

PING
PING Quality

Axions 
Preventive • Corrective • Improvement

Axions ID#
20130129134850

Workflow: [Submit Issue](#) > [Initial Review](#) = [Assign Priority](#) • [Leader](#) • [Due Date](#)
> [Solution](#) = [Issue](#) • [Root Causes](#) • [Goals](#) • [Action Items](#) • [Effectiveness](#) > [Final Review](#) > [Completed](#)

 Save

Axions Request


Axions Type:

Title:

PING Location:

Describe the Issue

Norm Weiss and Associates completed the 2012 External Environmental Compliance Audit.

 Add Note

Organizational Environmental Policies

Vendor Requirements

[home](#) | [about](#) | [social responsibility](#)

[INSIDE PING](#)

[TIMELINE](#)

[ISO 9001 & 14001](#)

[SOCIAL RESPONSIBILITY](#)

[ENVIRONMENTAL](#)

[MILITARY REBATE](#)

[CONTACT US](#)

[CLUB REPAIR](#)

[CAREERS](#)

CODE OF CONDUCT

NOTICE TO CONTRACTORS, SUPPLIERS AND LICENSEES

PING is committed to being the unquestioned leader in innovation, design, service and quality while providing an enjoyable environment for employees that allows them to fulfill their potential. PING expects its Contractors, Suppliers and Licensees, and any of their subcontractors and suppliers (collectively "CSL"), to share PING's commitment to the highest levels of product excellence and social responsibility.

PING expects its CSLs to foster respect for people, promote social responsibility, create a healthy and safe workplace, encourage environmental stewardship and achieve product excellence.

PING will continue to work cooperatively with its CSLs to ensure its standards are fully implemented. Any CSL that wishes to establish and/or maintain a business relationship with PING shall agree to be bound by PING's Code of Conduct ("Code").

LINKS

[CALIFORNIA TRANSPARENCY IN SUPPLY CHAINS ACT >](#)

[ENVIRONMENTAL & SAFETY POLICY >](#)

[ISO 9001/14001 >](#)

[SUPPLIER RESOURCES >](#)

- **Environment:** CSLs will comply with all applicable laws regarding protection and preservation of the environment in their country. All input materials and components must be obtained from permissible sources consistent with applicable laws.

Other Topics to Report

Potentially Adverse Matters - Inspections



Asbestos NESHAP – 4/12/12
Dust Permit – 5/29/12
Air Permit – 8/27/12

RCRA – 8/22/12

Inspection Results: No adverse findings

Other Topics to Report

Emerging Issues



