

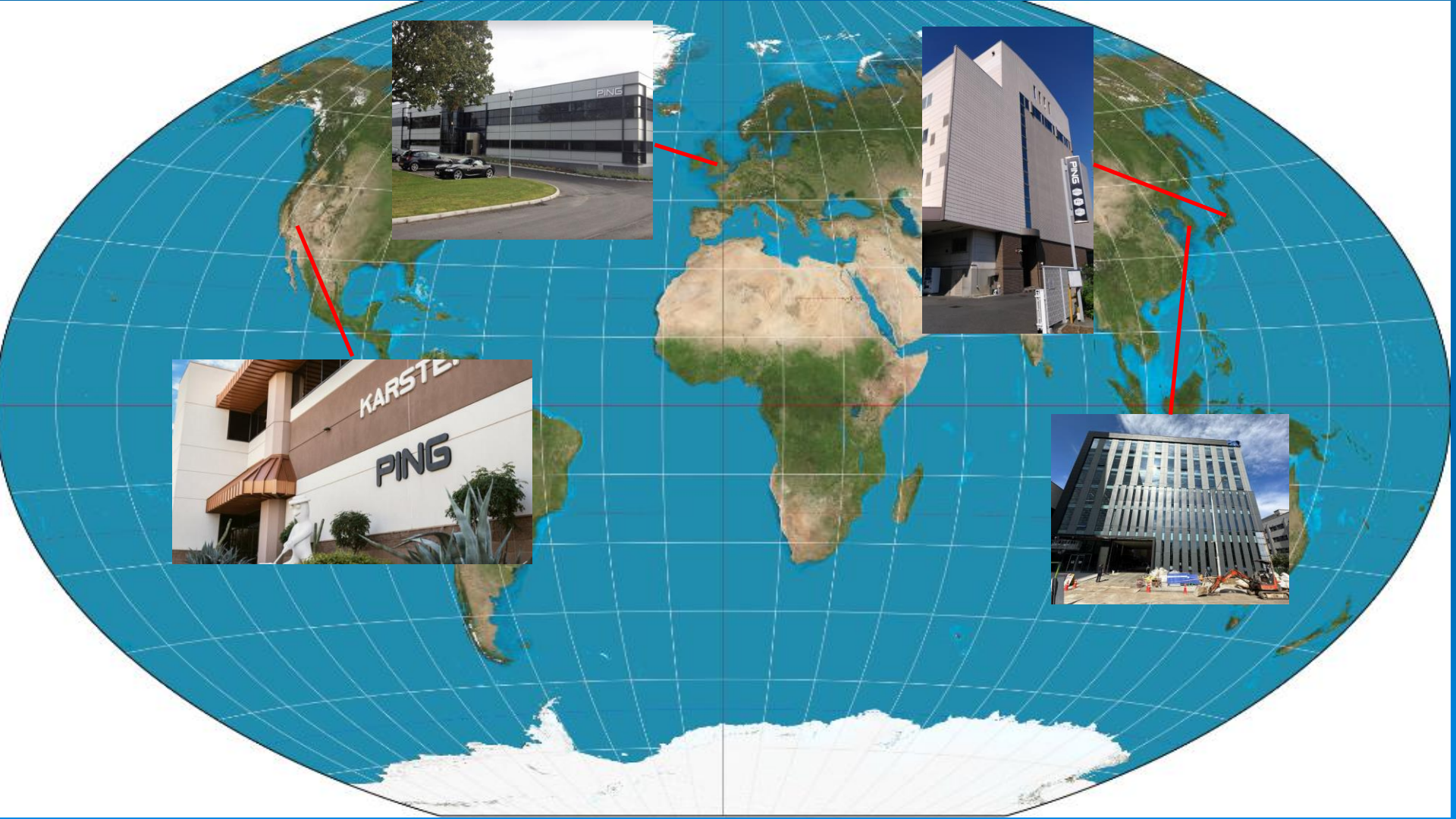
Arizona Environmental Strategic Alliance  
Member Annual Report - 2022



# Disclaimer

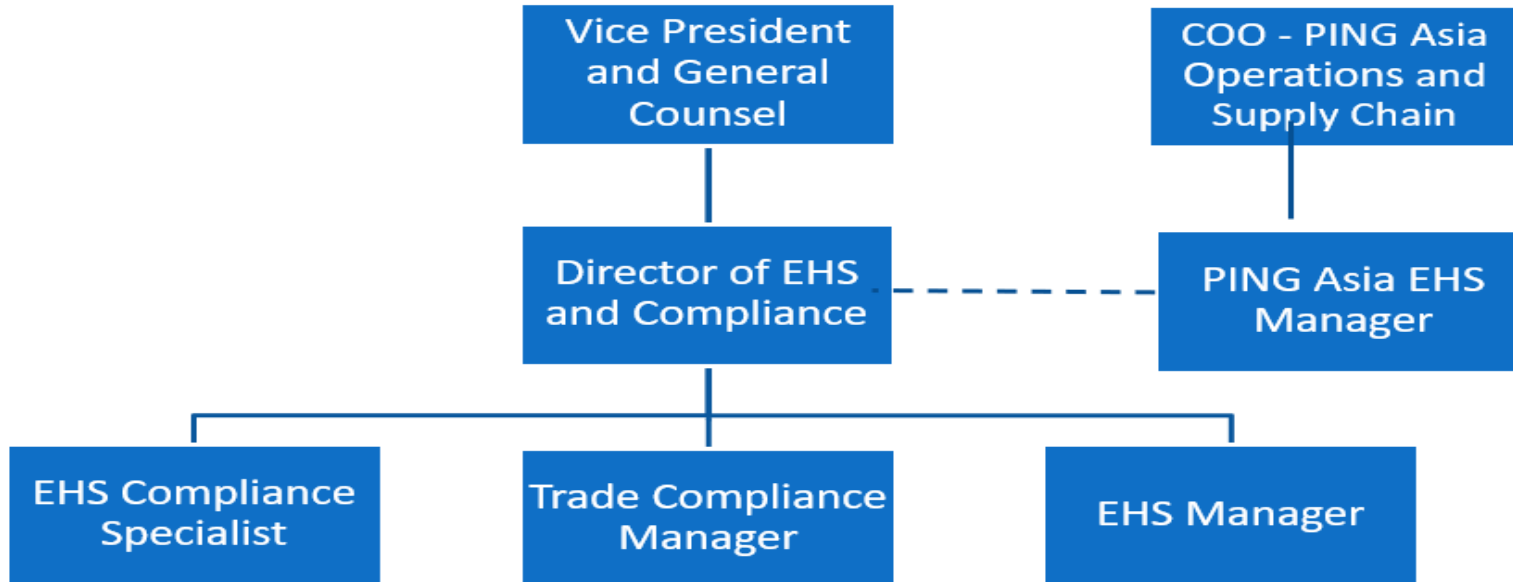
The content in this presentation is meant for educational purposes only. It is not intended as legal advice or guidance. All organizations are unique in their operations and circumstances. You should consult the advice of your advisors prior to implementation of your own programs.





# PING

## Compliance Organizational Chart



# Conservation and Pollution Prevention

## *Use of renewable energy technologies*

Goal: Continue to maximize the use of renewable energy technologies on campus.



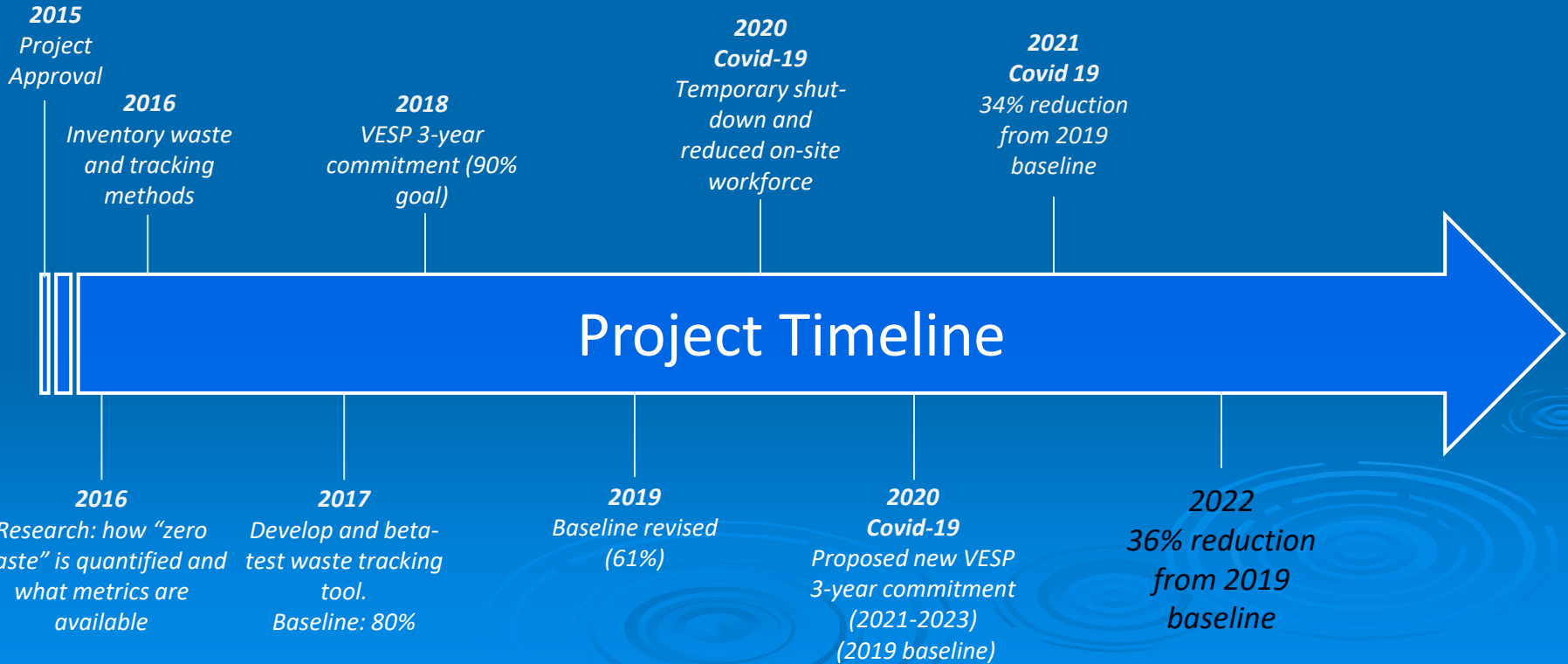
1. 750 kW capacity.
2. 2022 Solar Generation:  
1,392,571 kWh
3. About 57% of Anser Bldg's  
electricity consumption

1. APS Take Charge Program
2. Two chargers for employee use (4 vehicles)
3. Rolling 12-months: ~27,000 kWh

# Conservation and Pollution Prevention

*Implementation of a waste program or waste reuse practices*

Objective: Achieve a 5% diversion rate of waste sent to landfill by 2023 (P2 Plan Goal and VESP Commitment)

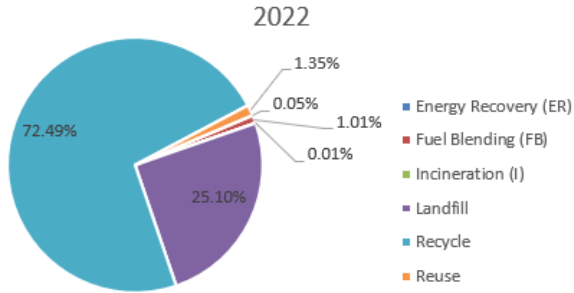


# Conservation and Pollution Prevention

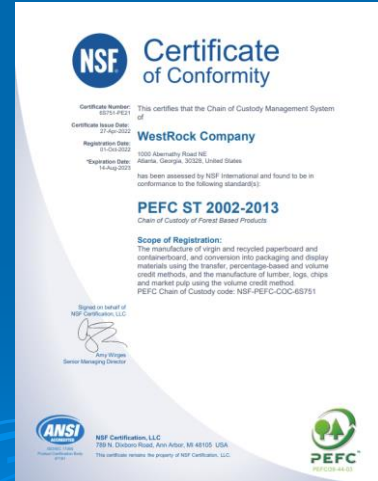
## Implementation of a waste program or waste reuse practices

Objective: Achieve a 5% diversion rate of waste sent to landfill by 2023 (P2 Plan Goal and VESP Commitment)

Waste Disposal Breakdown (%)



Year ▼



# Conservation and Pollution Prevention

*Implementation of a waste program or waste reuse practices*

Objective: Achieve a 5% diversion rate of waste sent to landfill by 2023 (P2 Plan Goal and VESP Commitment)

VESP Year 2 (2022) Actions





# Conservation and Pollution Prevention

*Implementation of a waste program or waste reuse practices*

Objective: Achieve a 5% diversion rate of waste sent to landfill by 2023 (P2 Plan Goal and VESP Commitment)

Process Improvements (to be fully reported in 2023)



# Education and Mentoring

*Mentoring other organizations regarding process improvements and pollution prevention approaches and techniques*

**EMBRY-RIDDLE**  
Aeronautical University

**PRESCOTT**  
ARIZONA CAMPUS



# Education and Mentoring

*Membership and active participation in voluntary federal, state, or local environmental protection or reinvention programs*

**PING Inc.**



## CERTIFICATE OF RECOGNITION

For your commitment to continuous environmental improvement through the use of environmental management systems, pollution prevention, resource conservation measures, public outreach and community involvement that exceed statutory requirements, and contribute to a cleaner, more livable community and environment.

**Misael Cabrera**

Digitally signed by Misael Cabrera  
Date: 2021.09.17 15:14:53 -07'00'

MISAEI CABRERA  
DIRECTOR  
ARIZONA DEPARTMENT OF ENVIRONMENTAL QUALITY



# Organizational Environmental Policies

## *EMS and Audit Program*



### Internal Audit – Management System

- Targeted 3 Processes
- Minor documentation observations

### Internal Compliance Audit

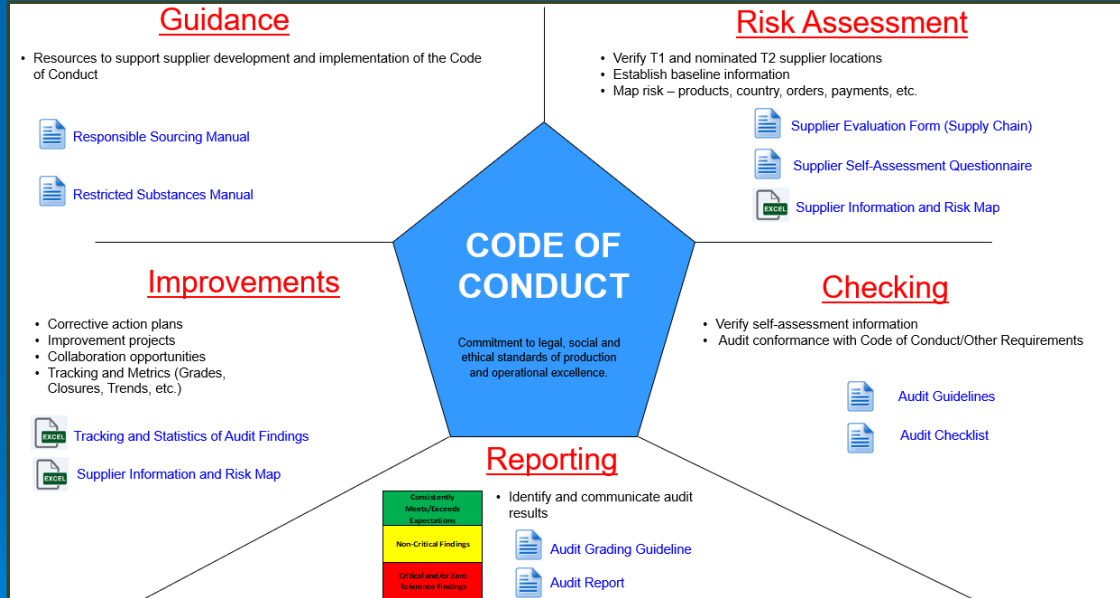
- No systemic issues – primarily program revisions to reflect campus updates

External 3<sup>rd</sup> Party Audit – scheduled for 2023

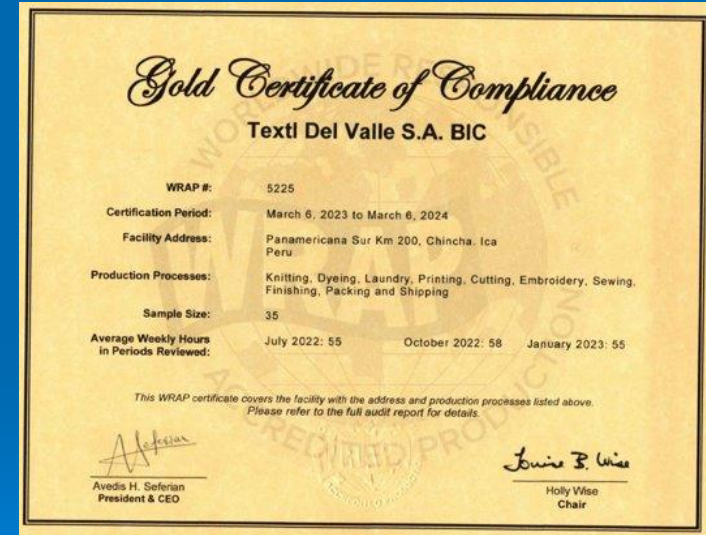
# Organizational Environmental Policies

## EMS and Audit Program

### Responsible Sourcing Program

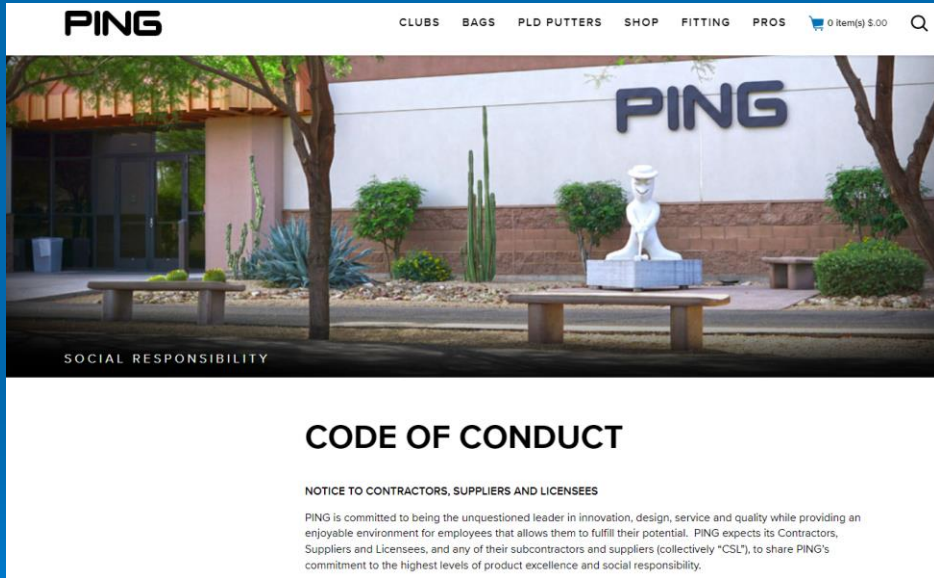


### Training Non-Compliance Personnel



# Organizational Environmental Policies

*Implementing a policy requiring vendors to meet the member's environmental requirements.*



The screenshot shows the PING website's social responsibility page. At the top, the PING logo is on the left, and navigation links for CLUBS, BAGS, PLD PUTTERS, SHOP, FITTING, and PROS are on the right. A shopping cart icon shows 0 items for \$5.00. Below the navigation is a large image of the PING building with a white statue of a golfer in the foreground. The text "SOCIAL RESPONSIBILITY" is overlaid on the bottom left of the image. Below the image, the heading "CODE OF CONDUCT" is centered. Underneath, it says "NOTICE TO CONTRACTORS, SUPPLIERS AND LICENSEES". The main text reads: "PING is committed to being the unquestioned leader in innovation, design, service and quality while providing an enjoyable environment for employees that allows them to fulfill their potential. PING expects its Contractors, Suppliers and Licensees, and any of their subcontractors and suppliers (collectively "CSL"), to share PING's commitment to the highest levels of product excellence and social responsibility."



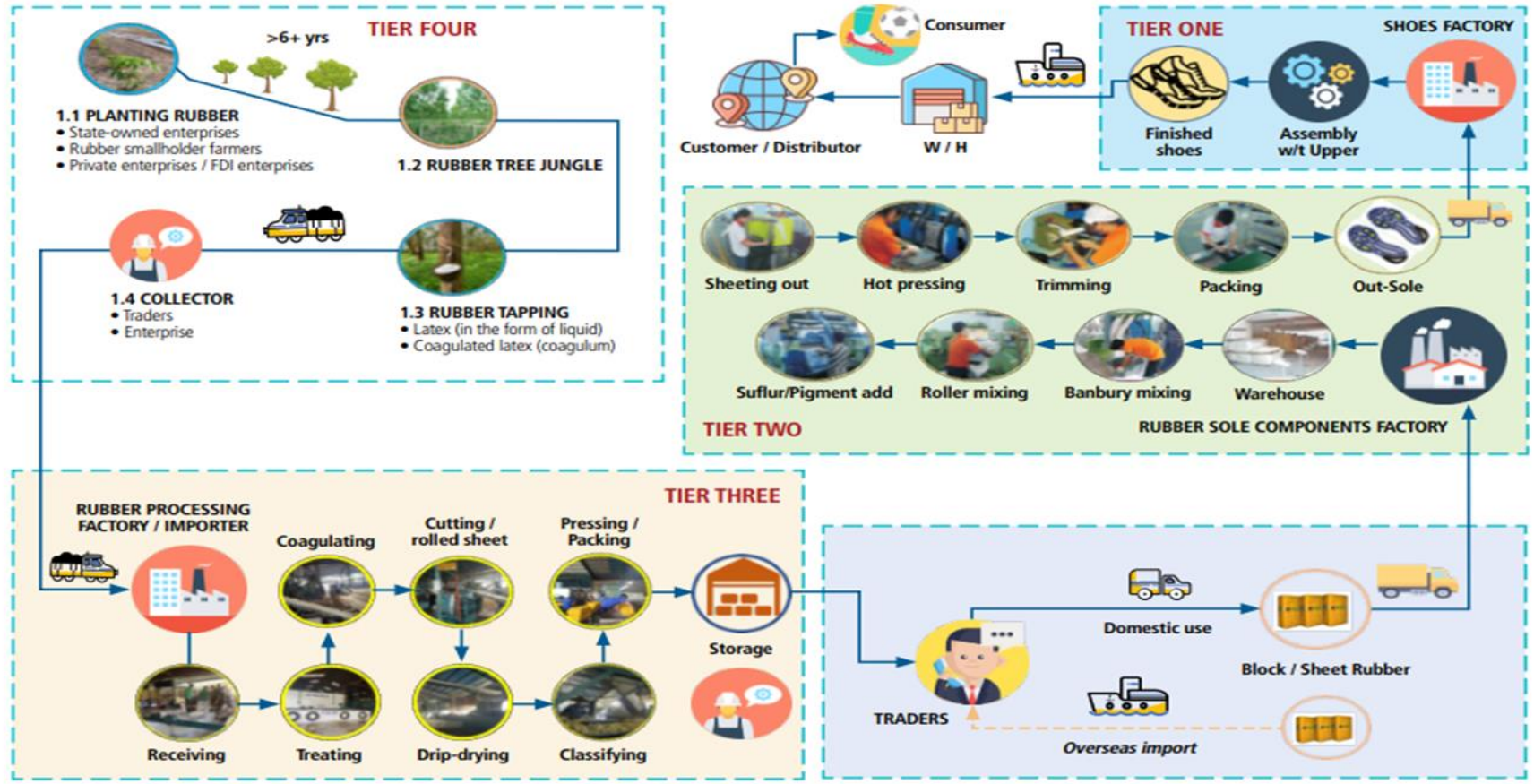
The image shows a press release from IJM Canada. At the top left is the IJM logo. The text reads: "IJM Canada is pleased to learn of the creation of Canada's **MODERN SLAVERY ACT.** This new law will enable Canadian corporations to be effective actors in addressing forced and child labour." The background features a clock tower with a Canadian flag on top.



The infographic consists of three parts. At the top right, it says "UYGHUR FORCED LABOR PREVENTION ACT". Below this is a map of China with the Xinjiang Uyghur Autonomous Region highlighted in orange. A red star marks Beijing. At the bottom left, there is a photo of two CBP (Customs and Border Protection) officers in a warehouse. At the bottom right, there is a red stamp that says "GUILTY until proven innocent".

Figure 2: NATURAL RUBBER SUPPLY CHAIN MAP

SUPPLY CHAIN MAPPING OF NATURAL RUBBER USED IN THE SPORTING GOODS INDUSTRY



# Organizational Environmental Policies

*Implementation of sustainability practices*

**TRADE IN AND MOVE UP  
TO THE NEW G430 FAMILY**





# Other Topics to Report

*Include any potentially adverse matters concerning your environmental performance*



- Air Quality Permit Inspection

One Opportunity to Correct - O&M Program

- Underground Storage Tank Inspection
- AZPDES Stormwater Multi-Sector General Permit (MSGP) Inspection

No Adverse Matters or Findings

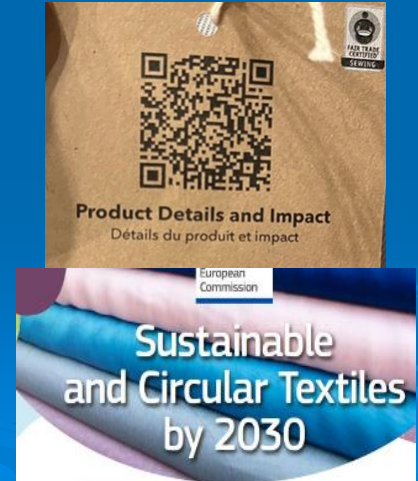
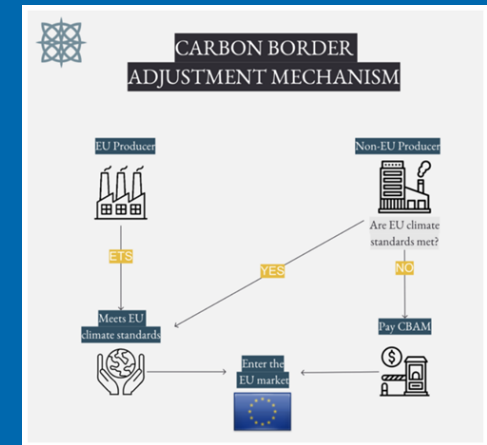


# Other Topics to Report

*Include any potentially adverse matters concerning your environmental performance*



# Trends



Thank you!

