

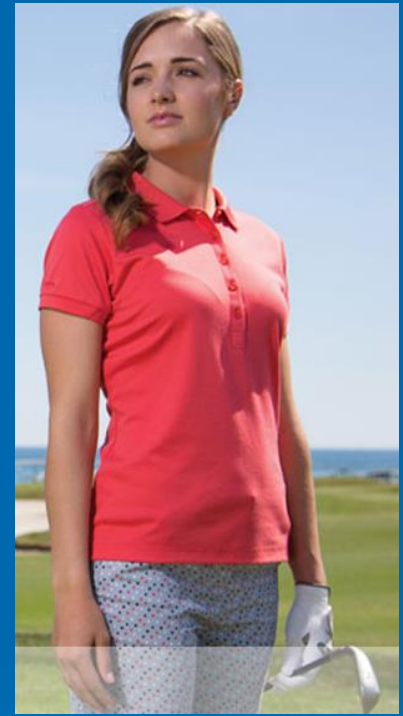
Arizona Environmental Strategic Alliance 2019 Member Annual Report

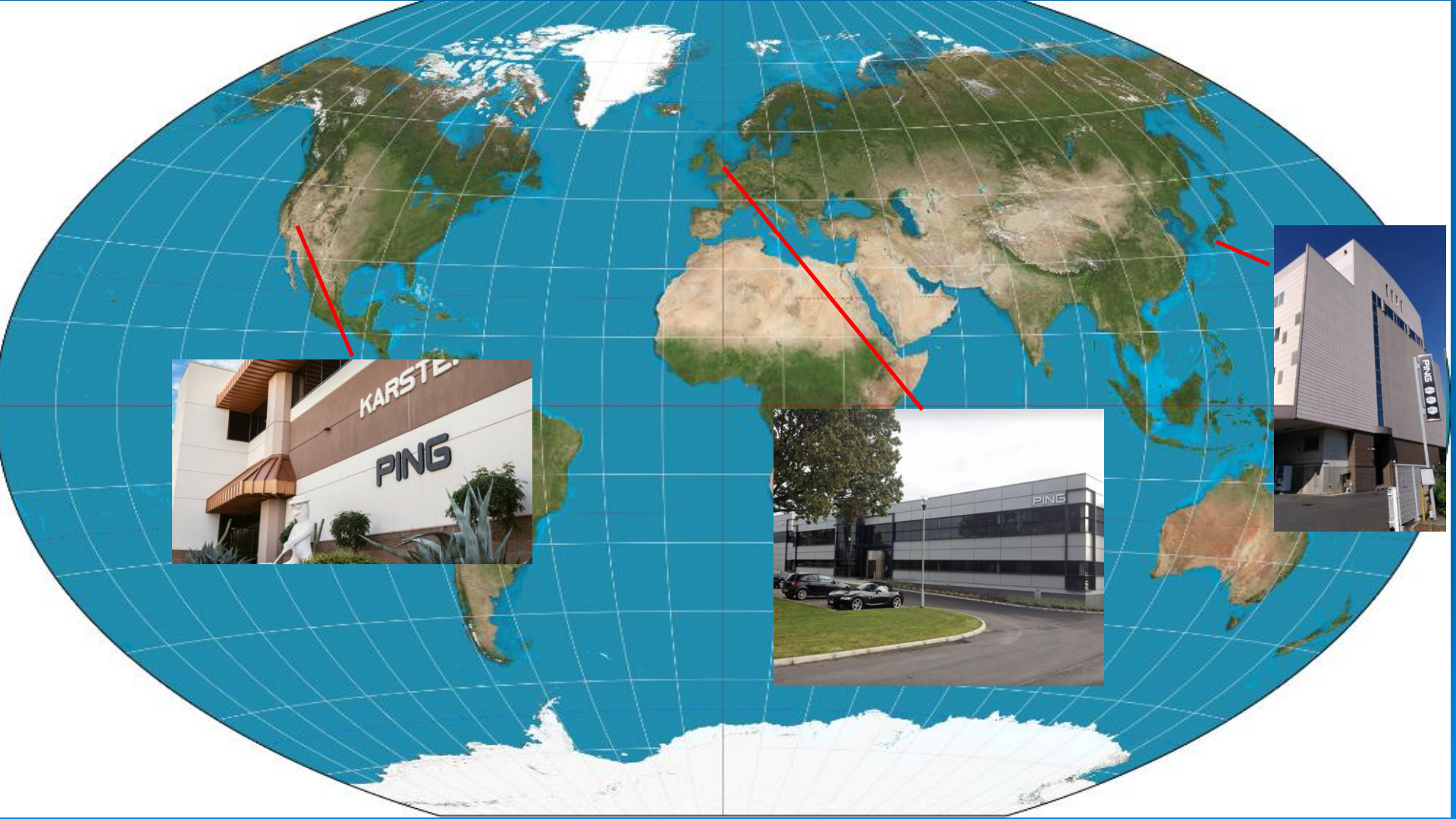


Disclaimer

The content in this presentation is meant for educational purposes only. It is not intended as legal advice or guidance. All organizations are unique in their operations and circumstances. You should consult the advice of your advisors prior to implementation of your own programs.

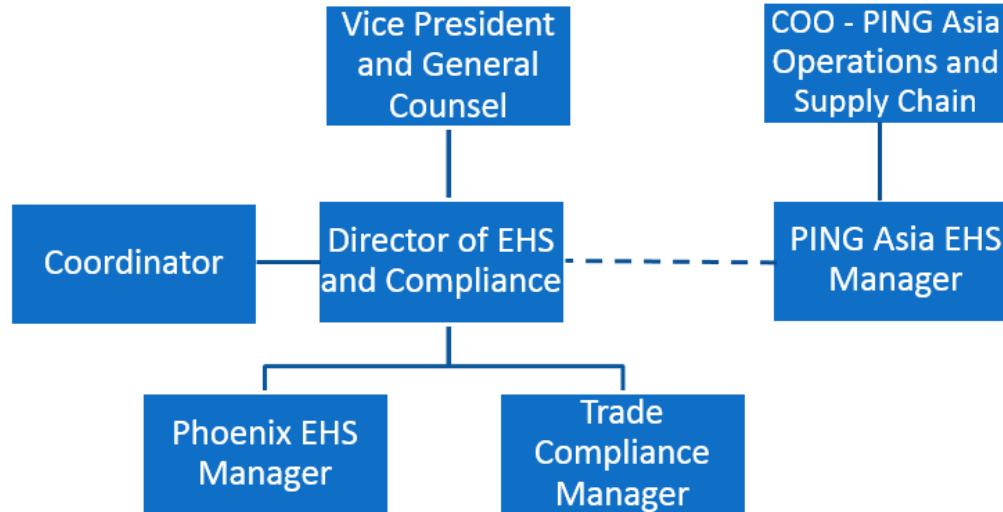






PING USA

Compliance Organizational Chart

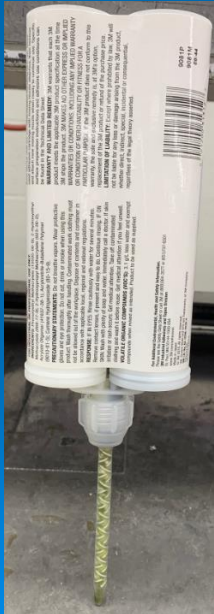


Conservation and Pollution Prevention

Implementation of a waste program or waste reuse practices

Objective: Reduce waste adhesives by 99% in 3 years (P2 Plan Goal)

Project: Improve Epoxy Dispensing and Use



Process:

1. Engineering developed new epoxy dispensing system – one-liter containers versus 500 ml cartridges
2. Devised method to completely drain container and use epoxy.
3. No longer generating these 500 ml cartridges
4. Goal met but difficult to quantify.

Conservation and Pollution Prevention

Implementation of a waste program or waste reuse practices

Objective: Reduce hazardous waste generation by 500 lbs/month and change HW Generator Status from a Large Quantity Generator to a Small Quantity Generator in 2 years.

Project: Implement [Solvent-Contaminated Wipes Rule \(40 CFR § 261.4\)](#)
Provides hazardous waste conditional exclusion



Conservation and Pollution Prevention

Implementation of a waste program or waste reuse practices

Objective: Achieve a 70% diversion rate of waste from landfill or incineration by 2021
(previous goal was 90%) (P2 Plan Goal and VESP Commitment)

Project: Investigate Alternative Disposal Options for PPE



Notes:

1. Gloves, garments, and safety glasses
2. Bulk materials for transportation
3. About 3 tons recycled in 2019.

Conservation and Pollution Prevention

Implementation of a waste program or waste reuse practices

Objective: Achieve a 70% diversion rate of waste from landfill or incineration by 2021 (previous goal was 90%) (P2 Plan Goal and VESP Commitment)

Project: Reduce styrofoam cup use by 90% in 3 years (March 2021).



Conservation and Pollution Prevention

Implementation of a waste program or waste reuse practices

Objective: Achieve a 70% diversion rate of waste from landfill or incineration by 2021 (previous goal was 90%) (P2 Plan Goal and VESP Commitment)

Year	2019			
Row Labels	Weight (tons)	Weight (% of Total)	Items (Number)	Items (% of Total)
■ No - Not Diverted	289	37%	63	19%
Garbage	273	34.9%	49	14.4%
Non-Hazardous Waste	15	1.96%	2	0.59%
Hazardous Waste	0	0.02%	10	2.94%
Medical Waste	0	0.00%	1	0.29%
TSCA Waste	0.009	0.00%	1	0.29%
■ Yes - Diverted	493	63%	277	81%
Used Oil	12	1.5%	5	1.5%
Non-Hazardous Waste	463	59.26%	229	67.35%
Hazardous Waste	2	0.30%	13	3.82%
Excluded Hazardous Waste	9	1.12%	16	4.71%
Electronics	6	0.71%	7	2.06%
Universal Waste	1.4209	0.18%	7	2.06%
Grand Total	782	100%	340	100%

2019 Challenges:

- Weight based measurement
 - Diverting about 81% of our items
 - (e.g. equal volume of food waste and plastic – different weights)
- Data quality
 - Detailed review of data, sources, acquisition, and entry
 - Discrepancies in earlier data (affects baseline)
 - Data validation, monthly status update

Conservation and Pollution Prevention

Programs to reduce water consumption

Objective: Water Reduction Improvements at the Test Range

Improvements:

1. Dethatching
2. Sprinkler Upgrades
3. Adjustments to Watering Times
4. Continue No Winter Overseeding

Results:

1. Supports 1.3 MM Gal Reduction
 - Note: Tee closed ~ 1 month
2. About \$6,000 cost savings

Education and Mentoring

Mentoring other organizations regarding process improvements and pollution prevention approaches and techniques



- ASU Guest Lecturer



- Student Reporter – PING Glove Recycling Program



- Benchmark Change Management Process

Corporate Social Responsibility:
Looking at EHS and Sustainability
Issues Outside the Box

Matt Conway, CHMM, CSP

Environmental Compliance Assistance for Business & Industry Seminar
October 29, 2019

- Compliance Assistance Conference

Education and Mentoring

Creating or participating in any program that enhances the goal of improving the organizations relationship to the environment, beyond that expected by regulatory requirement



**Platinum Level
CHARTER MEMBER**

CERTIFICATE OF RECOGNITION

PING, INC.

SUPERIOR COMPLIANCE HISTORY

For your commitment to continuous environmental improvement through the use of environmental management systems, pollution prevention, resource conservation measures, public outreach and community involvement that exceed statutory requirements, and contribute to a cleaner, more livable community and environment.





MISAEI CABRERA
Director

11/13/2018

DATE



Organizational Environmental Policies

EMS and Audit Program

Identification/Risk Factors	Information
KPIs (per Department/Process)	
Process	(e.g.) Task Completion
UOM	(e.g.) Due Date
Threshold	(e.g.) On Time
Historical Performance - Corrective Actions	
2015 CA	# of CA (if any)
2016 CA	# of CA (if any)
2017 CA	# of CA (if any)
Historical Performance - Field	
Detractors	Top 3 (if any)
EHS Required?	(Y/N)
Previous Audit	
2015	(Y/N)
2016	(Y/N)
2017	(Y/N)
Audit?	
2018	(Y/N)

Process Monitoring / Measurements – Key Performance Indicators / Trends.

Dept. KPI's

Timely Closure of Regulatory Tasks
Zero Environmental Notices of Violation or Safety Citations
Zero Regulatory Audit Findings

Corporate KPI's

Performance of EHS Objectives

- KPI's In Control?
- Standardized Reviews (e.g. EHS, training, document/record control, calibration, interviews, etc.)

Organizational Environmental Policies

Implementing a policy requiring vendors to meet the member's environmental requirements.

PING[®]

Notice to Contractors, Suppliers and Licensees

PING is committed to being the unquestioned leader in innovation, design, service and quality while providing an enjoyable environment for employees that allows them to fulfill their potential. PING expects its Contractors, Suppliers and Licensees, and any of their subcontractors and suppliers (collectively "CSL"), to share PING's commitment to the highest levels of product excellence and social responsibility.

PING expects its CSLs to foster respect for people, promote social responsibility, create a healthy and safe workplace, encourage environmental stewardship and achieve product excellence.

PING will continue to work cooperatively with its CSLs to ensure its standards are fully implemented. Any CSL that wishes to establish and/or maintain a business relationship with PING shall agree to be bound by PING's Code of Conduct ("Code").

PING[®]

Código de Conducta

PING[®]

Notice to Contractors, Suppliers and Licensees
給承包商, 供應商以及持照者之公告

PING[®]

Thông báo đến Nhà thầu, Nhà cung cấp và Bên được cấp phép

PING[®]

Pemberitahuan kepada Kontraktor, Pemasok, dan Pemegang Lisensi

Organizational Environmental Policies

Implementing a policy requiring vendors to meet the member's environmental requirements.



PING

RESTRICTED SUBSTANCE MANUAL

Substance	Plastics and other synthetic materials PU, PVC, Rubber, TPU, TPR, EVA, Foam, Natural/Synthetic Blends	Textiles and fabric from natural fibers	Textiles and fabric from synthetic fibers	Textiles – Natural and Synthetic Blends	Paint, Coating, Surface Prints, Inks, Adhesives	Natural Leather and Coated Leather	Metal Parts	Packages and Packaging Material
Metals (Cd, Pb, and Hg) – Add Cr, As, Cu for infant products.	•				•	•	•	•
Nickel (prolonged contact with skin)							•	
Chromium VI						•		•
Phthalates	•				•	• (coated leather only)		

***All products must meet the requirements of the PING Restricted Substance Program (RSP). The most recent version of the PING RSP is located at <http://www.ping.com> or a copy can be obtained by contacting csreports@ping.com. All items called out in PING PRDS documents are to meet or exceed the minimum requirements established in the PING RSP. Supplier should sign, date, and return the PRDS to PING and the signed PRDS constitutes acceptance of the PING RSP. Any Supplier substitutions, materials changes, or changes in the source for any materials must be approved in advance and must meet the requirements of the PING RSP. Conformance with the PING RSP is in addition to the PING Code of Conduct, supplier agreements, contracts, engineering and quality standards, and any other applicable laws or regulations.

Other Topics to Report

Include any potentially adverse matters concerning your environmental performance

(No Adverse Matters)



Learfield/IMG
College



Penn



TEXAS
The University of Texas at Austin

- Stormwater
- USTs

IMG COLLEGE LICENSING

- CSR Program Disclosures and Questionnaires

THANK YOU

